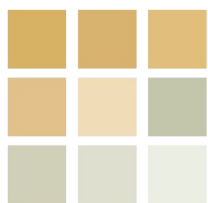




pearson
ferrier®



47 BUCKLEY GRANGE
Bury, BL9 0TY
Offers Over £125,000

47 BUCKLEY GRANGE

Property at a glance

- SECOND FLOOR APT.
- TWO BEDROOMS
- GAS CENTRAL HEATING
- CLOSE TO TOWN CENTRE
- PRIVATE GATED PARKING
- NO ONWARD CHAIN

Well presented, two bedroomed second floor apartment with allocated secure gated parking and located in a convenient position just off Manchester Road. The property is in walking distance to the Metrolink network and the centre of Bury with all its amenities and other with local shops and schools being on your doorstep. In brief the property comprises of; Entrance hall, lounge, separate kitchen, two bedrooms and bathroom. The property benefits from being warmed by gas fired central heating, double glazing throughout, with allocated secure parking via electric gates and communal gardens.

Tenure - Leasehold - 999 years from the 1st January 2002

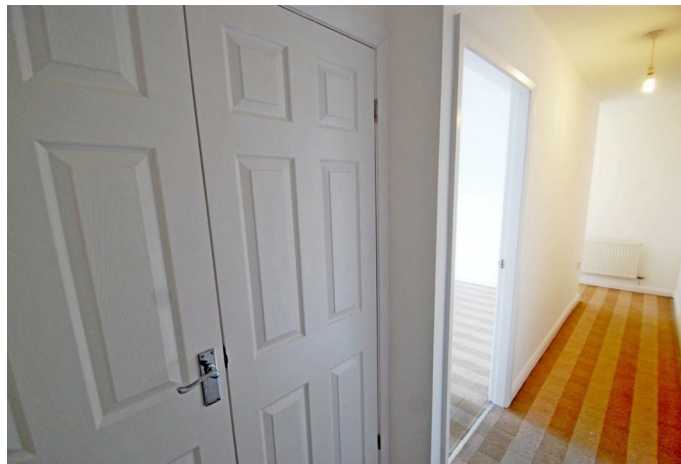
Ground Rent - £100 per year

Service Charge £102.70 per month

EPC - C

Council Tax Band - A





Floor plan of a 2-bedroom house. The plan shows two bedrooms at the top, a bathroom to the left of the central hallway, a lounge in the center, a kitchen at the bottom left, and an entrance hall with a storage area at the bottom right. The entrance hall has a door leading outside.

Whilst every attempt has been made to ensure the accuracy of the floorplan contained here, measurements of doors, windows, rooms and any other items are approximate and no responsibility is taken for any error, omission or mis-statement. This plan is for illustrative purposes only and should be used as such by any prospective purchaser. The services, systems and appliances shown have not been tested and no guarantee as to their operability or efficiency can be given.

Made with Metropix ©2022

